



GRASSHOPPER COUNTRY

## The Great Brak River Museum News Letter

2 Amy Searle Street  
Great Brak River

May 2007

Phone 044-620-3338

Fax 044-620-3176

Email: [gbrmuseum@intekom.co.za](mailto:gbrmuseum@intekom.co.za)

Contributions by Ina Stofberg  
Editor Rene' de Kock

### Dear Friends

During April I had a brief visit to Perth where I was invited to go crabbing at the Mandurah estuary which is some 65 kilometers out of the city. The fun began after sun down with a barbeque where we sampled the local borewors similar to ours but more spicy. Our team of three then entered the estuary which is usually not more than waist deep. Each of us on the flanks were provided with steel wire scoop nets whilst the middle man operates the under water light used to locate the crabs. This waterproofed light is specially constructed with a long handle out of which protrudes the electric cables and which are connected to a large battery carried in a top pocket. The light picks up the slightly lighter colored crab which you approach with haste and attempt to catch it from the side in which direction it flees. We caught a large number of these little monsters but most had to be released as they were undersize. After an hour of good going, I suddenly got out of depth and lost my shoes. Having been pursuing a large crab, I was suddenly confronted by a large object rising between my legs. Having almost left the water in a vertical direction, I discovered it was one of my "cros" an Australia slip-on shoe which has a built in float and not the crab. Much later we boiled the catch and sampled the delightful meat.

Next month I will tell you a little about the Fremantle Maritime Museum which has an interesting theme. Visiting numerous overseas museums allows one to put our own museum and collection in perspective.

The Great Brak River Art Hop was a great success and having purchased one of the Vorentoe grade school works of art; this is going to hang in our lounge. It will no doubt soon appreciate in value.



**Margaret Franklin & Ted  
Schroeder, Visiting the Museum  
in the "School House"  
February 2002**

Ted Schroeder has recently repaired and restrung a Golden Jr. harp made in Milan which was recently donated to the museum by Hester Borros who owns one of our heritage houses.

Heritage day this year in September will not be easily forgotten. The Outeniqua Railway Society will be organising a special Tjoe-Choo journey from George to Mossel Bay with a major function in Mossel Bay where the original train line started. A scheduled stop will be made at the Great Brak River Station to commemorate its one hundredth birthday.

A reminder to those visitors visiting the Wolwedans dam. A permit is required from the Department of Water Affairs for entry through the main gate. Access to the dam wall is still available via the hiking trail.

The museum has appointed a project manager for the Great [Brak River Crafts Workshop](#) and having completed several 'Hands on Workshops' have selected the initial full time work party. We may be able to take on additional workers but we will only know in a few months time.

### WHEN LAST DID YOU VISIT THE DIAS MUSEUM COMPLEX?

#### DIAS MUSEUM

Tel: 044 691 1067

Hours: Mon - Fri

9.00 - 16.45

Sat & Sun

9.00 - 15.45

Start your tour at  
the Granary

### HAVE YOU VISITED ANY OF OUR LOCAL RESTAURANTS?

#### Stonehill

in Little Brak River for  
exceptional dining.

[Phone 044-696-6501](tel:044-696-6501)

#### Whispering Waves

in Beach Boulevard.

Dias Beach

Small & intimate.

[Phone 044-692-8600](tel:044-692-8600)

#### Trans Karoo

1 Morrison Road,

Great Brak River.

Variety restaurant.

[Phone 044-620-4163](tel:044-620-4163)

#### Vaaljapie

At the station,

Little Brak River.

Dining-Booking essential.

[Phone 044-696-5878](tel:044-696-5878)

### Did You Know

Did you know that until fairly recently, "the extent of the Garden Route was not exactly defined, but it was regarded as the area which lies between the sea and the Outeniqua Mountains and their eastern extension, the Tsitsikama Range, stretching from Mossel Bay to a few miles beyond the Storms River Bridge, some 140 miles in total. Inland it is usual to include Oudtshoorn and the Cango Caves".

Did you know that early maps show the names of Great Brak River and Little Brak River reversed? In 1962 Little Brak River warranted only two lines in Gordon-Brown's Year Book and Guide to Southern Africa.

*"Little Brak River, 9m., is a pleasant camping resort with good boating, fishing and bathing (river and sea). Boarding house. Golf course."*

How things have changed. See the 1888-9 write up on Great Brak River in this month's Curators Corner. We believe the saddleback that is referred to is that at the top of the Sandhoogte road (the path of the old wagon trail)

Did you know that between the towns of Mossel Bay, this side of Oudtshoorn, George and Knysna, we have seven major road passes. Attaquas Pass (1756), Robinson Pass (1869), Great Brak Pass (1963), Montagu Pass (1847), Outeniqua Pass (1951), Kaaimansgat Pass (1778), The Passes Road including Homtini and Phantom Pass (1860). All are very interesting and colourful and most are now accessible without a four wheel drive. The Romance of Cape Mountain Passes by Graham Ross makes very interesting reading. There are in fact 490 mountain passes in the Western, Eastern & Northern Cape.

Did you know that computer hackers target easy to obtain addresses such as info@..... Because most companies use an address such as [info@their.website](mailto:info@their.website). To prevent hackers using your email address book to circulate damaging files, ensure the first address in your address book does not exist such as 00000@sms.co.za

OR LIGHT MEALS,  
COFFEE & TEA SHOPS?

### Pepper Tree

Long Street,  
Great Brak River.  
Coffee Shop and light meals.

[Phone 044-620-3081](tel:044-620-3081)

### De Katte

De Dekke extension, off the R 102,  
Great Brak River.  
Coffee Shop and light meals.

[Phone 044-620-2230](tel:044-620-2230)

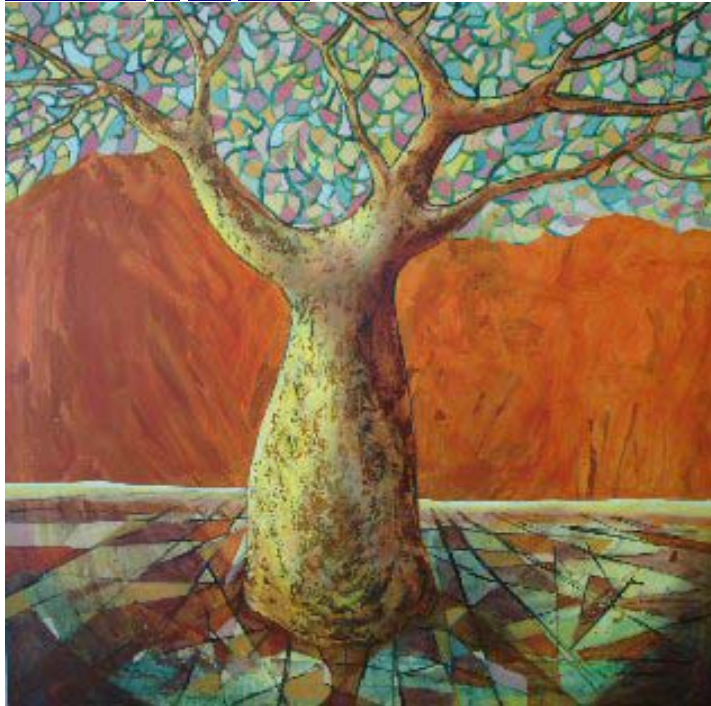
### Odditea Garden

Old George Road,  
Little Brak River.  
Tea Garden and light meals.  
[Phone 082-829-8587](tel:082-829-8587)

### Purple Onion

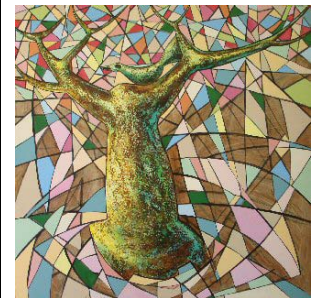
Long Street,  
Great Brak River.  
Deli and light meals.  
[Phone 044-620-3778](tel:044-620-3778)

### Grootbrak in die Nuus



**Tree of Knowledge**, from the series the "Timeless trees of Africa"

Two of Chris Spies's paintings will go on auction in the very near future in a bid to raise funds for the Great Brak River museum. The monies resulting from the highest bid on one of the two paintings will be donated to the Great Brak River museum funds. Full details will be published next month.



Also from the series the "Timeless trees of Africa" but with a kaleidoscope background.

Each painting measures approximately 1220 by 1220 mm

## THIS MONTH'S EVENTS

**Hope's Hands on Crafts Workshop** will start the biannual craft exhibition at the museum this month and will be held on **Tuesday 15<sup>th</sup> May at 9.30 a.m.** The class will be doing "Painting a trinket box"  
Contact Hope at 044-620-5124 or 083-378-1232. This arts and crafts exhibition will be on display at the museum from **15<sup>th</sup> to 19<sup>th</sup> May 2007.** The museum tea garden will be open.

**8 May**, Damesklub Mosselbaai om 10:00 by Arte Cafe Diaz Strand. Koste R 25.00 vir lede en R30.00 vir nie lede. Dit sluit verversings in.  
Bepreek asseblief vroegtydig u plek by Glynn by 044-692-0090 of Marie by 044-695-2033.

### 13 May

Remember Mother's Day!

### 30 Mei 2007

9:30 vir 10:00 by De Dekke Groot Brakrivier. Retha Macpherson - motiveringspreker en voormalige Mev Suid Afrika is die spesiale gas by die funksie wat ten bate van Laerskool Vorentoe in Groot Brakrivier aangebied word. Koste R 50.00 per persoon. Kontak Leana Ries vir kaartjies by sel: 0731450085

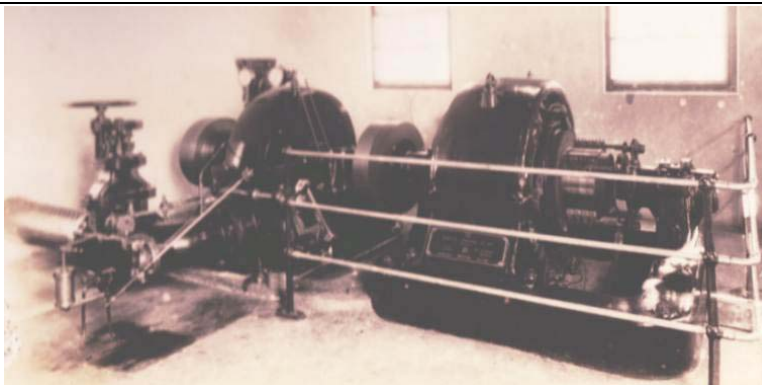
## Future Events

Saturday 2<sup>nd</sup> & Sunday 3<sup>rd</sup> June is **Keencrafts** with Craftwise at the CSIR Pretoria. This is a must visit fun outing with low cost workshops if you are interested in crafts. More details available on [www.keenoncrafts.co.za](http://www.keenoncrafts.co.za). Hope de Kock and her daughter Melinda will both be attending to bring back new ideas for the coming months.

**Ighali 2007** will be held on the 29<sup>th</sup> August to 2<sup>nd</sup> September in George. Go to [www.ighali.co.za](http://www.ighali.co.za) for more details. Ighali is a get-together for creative people, a unique stitching experience for all stitches, from beginners to expert, a variety of amazing workshops presented by the most talented needlecraft teachers in South Africa

## SA Tourism Snippets

- ❑ The Airline booking site, Travelstart, has achieved unprecedented success and was recently rated by Alexa.com – the amazon.com web-traffic ranking report – as one of the most popular SA online travel agencies.
- ❑ For an alternative way of getting to know SA – check out [www.backpackingsouthafrica.co.za](http://www.backpackingsouthafrica.co.za) or get a copy of Alternative Route Booklets (Available at hostels) to start planning the adventure of your life! Visit a place such as Buccaneers Backpackers at Cintsa in the Eastern Cape where you will be treated with a three-course dinner. A true African feast! Look out for dishes such as sweet pumpkin soup, roast beef with samp and beans, baked yams, wild spinach etc.



ONE OF THE 150 KILOWATT HYDRO ELECTRIC TURBINES AND ELECTRIC GENERATORS ORIGINALLY INSTALLED IN GREAT BRAK RIVER. UNFORTUNATLY THIS PARTICULAR UNIT HAS BEEN LOST.

## Points to Ponder

- ❖ The ultimate goal of a more effective and efficient life is to provide you with enough time to enjoy some of it. - Michael Le Boeuf
- ❖ If your energy is as boundless as your ambition, total commitment may be a way of life you should seriously consider. - Dr. Joyce Brothers
- ❖ May you live as long as you wish and love as long as you live. - Robert A. Heinlein



THE RECONDITIONED PELTON WHEEL  
BEING LOWERED INTO THE CASING.  
SEPTEMBER 2003

## THE CURATOR'S CORNER by Nisde McRobert

Excerpt from the 1888-9 Edition of the Guide to South Africa for the Tourists, Sportsmen, Invalids & Settlers, cost 2/6 Provided as a travelling guide by the Castle Line to South Africa.

### From Mossel Bay traveling to:-

**Great Brak River**, 16 miles, 2½ hours., a small village and posting station beautifully situated close to the sea, and much frequented as a summer resort. (Temperance Hotel and others.) A climb of half a mile to the top of the saddleback affords a charming view, the valleys on each side being well wooded and thick with beautiful flowers and ferns. Far below on the left hand side, the dark waters of the river wind among pastures of the most vivid green, whilst, on the right, the hills rise more abruptly, and after rains a stream dashes down in a series of cascades to the valley below, where the white cottages are visible among the trees. Advantage has been taken of the water supply for industrial purposes. Tanning and wool-washing is carried on, and there is a boot-factory and cornmill.

At 2½ miles, on attaining the summit of the hill the road emerges on to flat table-land, some six hundred feet above sea level, affording good pasturage to horses and cattle, then continues, with variations of hill, dale and swamp, to BLANCO (pop.460, hotel), a prettily situated hamlet, whence a well-made road leads to George in three miles.

**Mossel Bay**, Mossel Bay. 239 miles from Cape Town by land, and about midway between Cape Town and Port Elizabeth by sea. (pop 2064).

*Hotels: Standard, 7s 6d : Union, 7s 6d : Masonic, 6s English, Dutch and Roman Churches. Good Library. Park.*

*The town is situated on the slope of the Southern shore of Mossel Bay and, pretty enough from above, does not present a very attractive appearance from the sea. The streets and park however, have been greatly improved of late years by the planting of trees. The houses have been well built, the material in most instances being the sandstone quarried in the neighbourhood. The bay is protected from westerly gales by Cape St. Blaize, which stretches some distance out to sea on the South-East side of the town.*

*A wharf, built of wood and iron at a considerable cost, enables vessels to load a discharge cargo by means of lighters. At the extremity of the point, some twenty minutes' walk from the town, a lighthouse has been erected on the headland of St Blaize, which rises almost sheer from the sea to a height of about 200 feet.*



© The content of this newsletter is copyright and it may only be reprinted by request from the Great Brak River Museum Association.

Compiled & Distributed by the Great Brak River Museum.

The Museum Association cannot be held responsible for any inaccuracies or omissions in the text.

If you no longer wish to receive this e-newsletter, please will you reply to this email address with the word "unsubscribe" in the subject box.