



GRASSHOPPER COUNTRY  
*The Great Brak River  
 Museum News Letter*  
 2 Amy Searle Street  
 Great Brak River

September 2007

Phone 044-620-3338

Fax 044-620-3176

Email: [gbrmuseum@intekom.co.za](mailto:gbrmuseum@intekom.co.za)

Contributions by Ina Stofberg  
 Editor Rene' de Kock

*Dear Friends*

*Issue 9 of 2007*

This month heralds the start of spring and the countdown to our fair on Heritage day. We also welcome two new honorary members to the museum association. Tannie Nunes who ran the museum before the present committee took over seven years ago and Dr. Harriett Hauptfleisch who has been a staunch member of the museums board of control.

The full program for Heritage day on the 24<sup>th</sup> September is published further down.

The fundraising bidding for the two Chris Spies paintings is well underway and at the time of going to press we have received numerous bids and the bidding now stands at:

**The Kaleidoscope Tree at R 6550.00**  
**The Tree of Knowledge at R 7200.00**

Contact the museum should you wish to raise the bidding. It's for a good cause.

We also wish to record the sad departure of Seamus O'Riordan who passed away recently at their holiday home on Gozo Island, Malta. Marian and Seamus were very active in the reorganising of the museum starting seven years ago when they lived in Great Brak River. Marian has since returned to Preston, England to look after her aging mother.



**The museum is putting together a recipe book to help raise funds. Come on readers, do you have any old favourite family recipes to contribute?**

**The Great Brak river mouth will be breached on the 25<sup>th</sup> September.**



**The Great Brak River Station and the Island cir. 1950.**



**The Great Brak River  
 Information Office**  
 P O Box 20,  
 Great Brak River,  
 6525  
 Tel: (044) 620-3338  
 Fax:(044) 620-3176  
[gbrtourism@intekom.co.za](mailto:gbrtourism@intekom.co.za)

**SOME OF OUR  
 LOCAL B&B'S AND  
 GUEST HOUSES.  
 PLEASE CONTACT  
 THE OFFICE FOR  
 MORE  
 INFORMATION**

**Ambience Guesthouse  
 Outeniquastrand**

044 879 2916  
 082 851 9623  
[jcsteyn@mwb.co.za](mailto:jcsteyn@mwb.co.za)



We pride ourselves on spoiling you!



**Great Brak River  
Passenger Rail Service  
1907-2007**

**Great Brak River Heritage Day Train  
Special. A train ride to remember. Limited  
seats available in our own coach.**

**Obtain your centenary celebration train vouchers at  
the Great Brak River museum which entitles you to  
a concessionary train ride ticket, cold drink and  
party pack.**

**The Great Brak River coach will have a team leader on each leg of the journey.  
Please join us for as many legs as you like.**

**George to Great Brak River: Departs George 10.00 am, Arrives 10.55 am  
Great Brak River to Mossel Bay:**

**Departs 11.13 am, Arrives Mossel Bay 12.00 noon.**

**Mossel Bay to Great Brak River:**

**Departs 14.15 pm, Arrives Great Brak River 14.52 pm**

**Great Brak River to George:**

**Departs 15.07 pm, Arrives George 16.35 pm (Pensioners special).**

**Please meet your host/hostess 15 minutes before departure time.**

**Vouchers are exchangeable at the ticket office in George for a  
train ticket where you pay prior to departure. Those joining en  
route can exchange their vouchers on the train for a ticket and  
pay the train manager.**

**Single journey: Adult: R20.00 for vouchers + R50.00  
Child under 16: R20.00 for vouchers + R30.00**

**Return journey: Adult: R20.00 for vouchers + R85.00  
Child under 16: R20.00 for vouchers + R40.00**

**One child under six years old per family travels free.**

**The final leg, Great Brak River to George is also our pensioner special and  
vouchers for the single journey are only R 15.00 each  
(Great Brak River Pensioners only)**

**Vouchers are only available at the Great Brak River Museum.**

## Great Brak River Heights



## KIA ORA



Homegrown hospitality  
Great Brak River Heights  
**044 620 3685**  
[kiaora@kia-ora.co.za](mailto:kiaora@kia-ora.co.za)  
073 334 7179  
[www.kia-ora.co.za](http://www.kia-ora.co.za)



**GLENTANA**  
**044-879-1392**  
**082-830-8879**  
[shamrockgh@worldonline.co.za](mailto:shamrockgh@worldonline.co.za)

## THIS MONTH'S EVENTS

**8 September 2007:** Huise kyk Projek . Die fondsinsameling van Laerskool Vorentoe word vir die 5de jaar aangebied. Elke persoon ontvang 'n boekie met 'n padkaart wat gevolg kan word na die 10 huise wat oop is vir besigtiging. Daar kan by enige huis begin word. Dit begin om 10:00 en eindig om 17:00. Kaartjies kos R 45.00 per persoon en dit sluit koffie of tee by die Ou Pastorie in . Eetgoed van die Plaaskombuis sal te koop aangebied word. Vir enige navrae of kaartjies kontak Careen Pienaar by 0827506527 of Laerskool Vorentoe by 044 6202211.

**Hope's Hands on Crafts Workshop** at the museum will be held on **Tuesday 18<sup>th</sup> September at 9.30 a.m.** The class will be doing " Three Dimensional Decoupage (Repousse) ". Contact Hope soonest at 044-620-5124 or 083-378-1232 for full details including costs. Don't forget to bring your kit box.

**20 September 2007:** Musiekmiddag ten bate van Kansa by Chris Spies Kunstgallerie in Groot Brakrivier. Tyd 15:00 - 17:00. Sangers soos Johann Ries, Alzonja Titus, Tashia ens ens sal die middag optree. Toegang 'n minimum van R50.00. Baie belangrik om u plek vroegtydig te bespreek by Juanita van Wyk by 0826729377 of 044 8881695. Beperkte plek beskikbaar.

**W P Blood Transfusion Service** will be at the Dutch Reformed Church on **Thursday 20 September** between 15h00 and 19h00. Please come and donate blood.

**Outeniqua Country Hop festival.** This Festival will take place on **Saturday 22<sup>nd</sup> September** at the Redberry Farm, Geelhoutboom. Contact 044 870 7123 or 083 348 2129 Fiona de Villiers [www.outeniquahop.co.za](http://www.outeniquahop.co.za)

**Great Brak Rivers Heritage Day Fair** will be on the **Monday 24<sup>th</sup> September.**

## THE HERITAGE DAY PROGRAM



On **Monday 24 September 2007**, the Great Brak Museum will commemorate the centenary of the local Passenger Railway Service with a fair.

Starting at 7.00 am the Hartenbos Harriers are holding a 15 km race starting from the Great Brak River station to Glentana initially along Morrison Road and back as well as a 5 km fun run. The race is featured on the SWD calendar. For further details contact Paula on 082-788-2461

The station fair with numerous stalls starts at about 9.30 am and will continue until 4.00 pm. The Trans Karoo restaurant will be open for breakfast and all day to provide snacks, light meals and a barbeque (It is also National Braai day in South Africa).

There will be a jumping castle for the children and amongst others; old fashioned and delicious toffee apples will be sold. The two works "Tree of Knowledge and the Kaleidoscope Tree" of local artist Chris Spies may be viewed for the last time and last minute bids may also be accepted. Hand work from the Great Brak River CRAFTS WORKSHOP will be on sale.

The train from George arrives at 10.55 am with the Great Brak River Brass Band on board.

The train departs 11.13 am for Mossel Bay where the Diaz museum will be providing a welcome.

Train returns from Mossel Bay at 14.52 pm and departs for George at 15.07 pm. This is also the pensioners special.

Evening fun at the "Trans Karoo" restaurant. This evening the restaurant will be serving a three-course meal with a choice of three dishes per course. The meal will be accompanied by a pianist as well as the soft jazz sounds from the local band *Shades of Blue*.

**Dress is informal with a black-and-white theme.**

Tickets are available at R 80.00 each and prizes will be offered for the best dressed couple.

Contact the Museum for tickets, entry forms, vouchers or information at 044 620 3338

## Future Events

Friday 5<sup>th</sup>, Saturday 6<sup>th</sup> & Sunday 7<sup>th</sup> October is **Keenoncrafts** with Craftwise in Cape Town. This is a must visit fun outing with low cost workshops if you are interested in crafts. More details available on [www.keenoncrafts.co.za](http://www.keenoncrafts.co.za).

## Some Local Self Catering Accommodation Establishments

**PLEASE CONTACT THE OFFICE FOR MORE INFORMATION**



**Corrie Vale**

**Self-Catering**

10 De Werf Street  
Great Brak River ext 7  
+27 (0) 44-620-5124  
+ 27 (0) 83 378-1232  
[corrievale@mweb.co.za](mailto:corrievale@mweb.co.za)



**HOUGH'S HERBAL HUB**

**B & B AND SELF-CATERING**

20 Mossienes Ave, Grootbrak  
044 620 3143 or 082 435 9568  
[hhub@intekom.co.za](mailto:hhub@intekom.co.za)

## Did You Know

- Leila's Arms, a restaurant on the Blanco road is one of the few local restaurants where a large vegetarian menu is available.

Lunches Tuesday to Friday and Sunday. Contact Gaby Coetzee-Andrew on 084-844-7996



*Leila's Arms*

## Leila's Arms

**Farm Eatery**

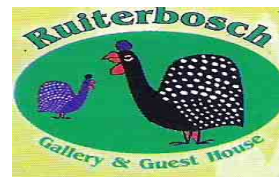
Near Fancourt Blanco.

Unique and Local restaurant.

Phone 044-870-0292  
[eat@leilas.co.za](mailto:eat@leilas.co.za)

## Points to Ponder

- About all you can do in life is being who you are. Some people will love you for you. Most will love you for what you can do for them, and some won't like you at all. - Rita Mae Brown
- Measure yourself by your best moments, not by your worst. We are too prone to judge ourselves by our moments of despondency and depression. - Robert Johnson
- **AND CASANOVA SAYS: As for myself, I always willingly acknowledge my own self as the principal cause of every good and of every evil which may befall me; therefore I have always found myself capable of being my own pupil, and ready to love my teacher. - Giacomo Casanova**



044 6310120  
083 710 2586  
martha@polka.co.za

### What to do when in Great Brak River.

The historic village, founded in 1859, is home to the first veldskoen (sand shoe), masterminded in 1878 at the famous Watson (Grasshoppers) now Bolton's shoe factory.

The Outspan Flea market, under the indigenous Milkwood trees, is the oldest monthly market in the area and is sited on the original outspan (overnight cattle encampment).

Early May is the annual Village Festival with its colorful parades and fun filled events. The river estuary teams with bird life and vegetable crops are still cultivated by the indigenous people with horse drawn ploughs.

Visit the information office to discover more about the historic museum, the Island and the working water driven power-generating turbine first commissioned in 1924.

**Walk the Wolwedans hiking trail to the dam wall, the highest in South Africa or do the seashore walk from Glentana to the century old wreck of the floating dock.**

**During the whale season, May to November, Hersham has good lookout points to view the frolicking whales and their young calves.**

**Great Brak River has the largest known Pepper Tree in South Africa (11.2m) in diameter.**

Pay a visit to Botlierskop a private game reserve with its large heard of black impala, rhino, elephant and many other species. Game drives are their specialty.

Visit Friemersheim, which offers spectacular scenic views and the ruins of a "Smithy" and an old slave quarter.

But best of all enjoy the local hospitality, the various overnight establishments and bask on the many sun drenched sandy beaches.

**Only available  
in Africa**



**The New Toyota Cowrolla!**

# SA Tourism Snippets

▪ Hello,  
 Goodday dear sir/madam,  
 i am JOHN from unitedkingdom the manager of skyharmonytravels company.  
 i need 6rooms for my client's that is coming to your country for their vacation  
 10day's vacation and coming to stay and watch the event's that is  
 holding on 5th,6th,7th & 8th of september 2007 in your country WWE & ECW RAW SUMMER  
 SLAM TOUR. EVENT, and they will be spending 10day's for this event's in your country.please  
 due get back to me with the updates.and arrival dates is 3th of september 2007

Be blesss.

REGARDS,  
MANAGER,  
JOHN.

ADRESS: skyharmony House,  
 Layer Road,  
 Kings ford, Col chester CO2 0HT , England  
 PHONE:+447024067595

Besides being a typical  
 Scan email, should he be  
 a manager and in the  
 Tourism Business.  
  
 What about minimum  
 English for the  
 Hospitality Industry?

## MAROPENG

Maropeng is 'n Setswana woord wat beteken : ' Om terug te keer na die plek van  
 oorsprong' en dit is sowat 'n uur se ry van Johannesburg. Die gebied is in 1999 tot  
*wêreld-erfenis* gebied verklaar en die 47 000 hektaar sluit die *Wieg van die*  
*Mensdom-gebied* in vanweë die talle fossiel ontdekkings by die Sterkfontein  
 grotte - o a Mev Ples en 'Little Foot'.

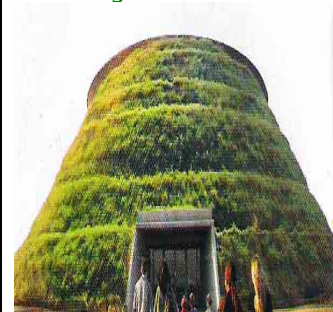
Op pad Maropeng toe is daar beton beeldhouwerke wat soos wagte waak langs die  
 pad. Elkeen met 'n naam wat woorde insluit soos : Besef, Onderhou , Verlede,  
 Toekoms, Bepeins, Ontdek ,Ondersoek , Vier, Ondervind, Verstaan en Verbeel.

Maropeng is egter nie 'n vervelige lesingslokaal nie maar 'n wetenskaples met 'n  
 Disney-pret aanbiedingstyl wat temapark-ontwerpe insluit. Die hoof-Tumulus  
 gebou is die middelpunt en die voorkant van die struktuur is grasbedek en volgens  
 antieke grafheuwels ontwerp en die agterkant 'n fassinerende glas , staal en beton  
 konstruksie. Die fokus binne die struktuur is egter altyd op die uitstallings  
[info@discover-yourself.co.za](mailto:info@discover-yourself.co.za) of [www.discover-yourself.co.za](http://www.discover-yourself.co.za)

Tye : **9.00 vm to 17.00**

**Vir inligting en  
 aanwysings skakel :**  
**014 577 9000**

Spesialiteitstoere na die  
 Sterkfonteingrotte kan ook  
 gereël word.

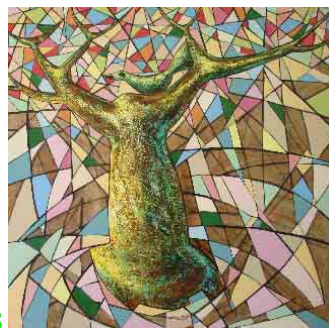


## GOING GOING GOING



**TWO TREES**

**The Tree of Knowledge.**



**The Kaleidoscope Tree**

Each acrylic on board painting measures approximately 1220 by 1220 mm

The museum newsletter  
 accepts small adverts,  
 45 mm x 60 mm @ R25.00  
 for four insertions if  
 museum or tourism  
 members otherwise R50.00

Artwork not included

Contact Ina on  
 044-620-3338

## **THE CURATOR'S CORNER** by Nisde Mc Robert

### THE RAILWAY ACCIDENT BETWEEN GREAT BRAK RIVER AND GEORGE on the 17<sup>th</sup> Dec. 1926

The mixed goods train was traveling from Oudtshoorn to Mossel Bay. The disaster occurred approximately 2 miles (3km) from Great Brak River Station and the Outeniqua siding. The engine was lying on its back and it seemed the next truck was upright but for 40 yards (3.6metres) fourteen trucks were piled one on top of the other and down



the embankment. Only the last passenger coach and guard's van stood on the rails. Bags of potatoes, remnants of motorcars, smashed into an unrecognisable mess, and rails and sleepers were scattered over the scene. On top of the engine lay a Ford motorcar. The railway line had moved 5 feet from the correct alignment. The curve where the accident occurred is seen after a steep incline down the Great Brak heights. Obviously the train gathered momentum and going too fast the driver tried to slow the train down with dire consequences.

The fireman, Marthinus Rademeyer, ran the distance from the scene of the accident to the Great Brak River station and the driver, Mr. Gestenbach, arrived at the station being helped along the way by a Coloured man. The stationmaster, Mr. Obermeyer and his assistants contacted the Authorities and the Railway

Doctor when they realised the severity of the injuries. The Doctor hurried from George when it was ascertained that both men were seriously injured with severe burns. The men were taken to Mossel Bay for further medical

treatment but later the fireman died from his injuries. There is a stone in a Mossel Bay cemetery bearing the words

" In Memory of Fireman M. Radermeyer, who lost his life in the Great Brak River disaster on the 17<sup>TH</sup> Dec.1926.

From the Railway and Harbours Staff, Mossel Bay."



Mr. Rademeyer left a wife and one child. His father was a labourer in the Railway goods shed in Mossel Bay.

Fortunately the passengers Mr. & Mrs. L.J. Bredell and their family, Mr Reg Barry and his two children plus their attendant Cath' Meyer, Mr. Oosthuizen from

George and three Coloured people from George escaped injury.

Mr Dick Barry, an attorney in Calitzdorp was one of the Barry children aboard. The accident happened on a Friday night and on Saturday morning crowds of holidaymakers from Great Brak River were visiting the scene of the accident.



© The content of this newsletter is copyright and it may only be reprinted by request from the Great Brak River Museum Association.

Compiled & Distributed by the Great Brak River Museum.

The Museum Association cannot be held responsible for any inaccuracies or omissions in the text.

If you no longer wish to receive this e-newsletter, please will you reply to this email address with the word "unsubscribe" in the subject box.